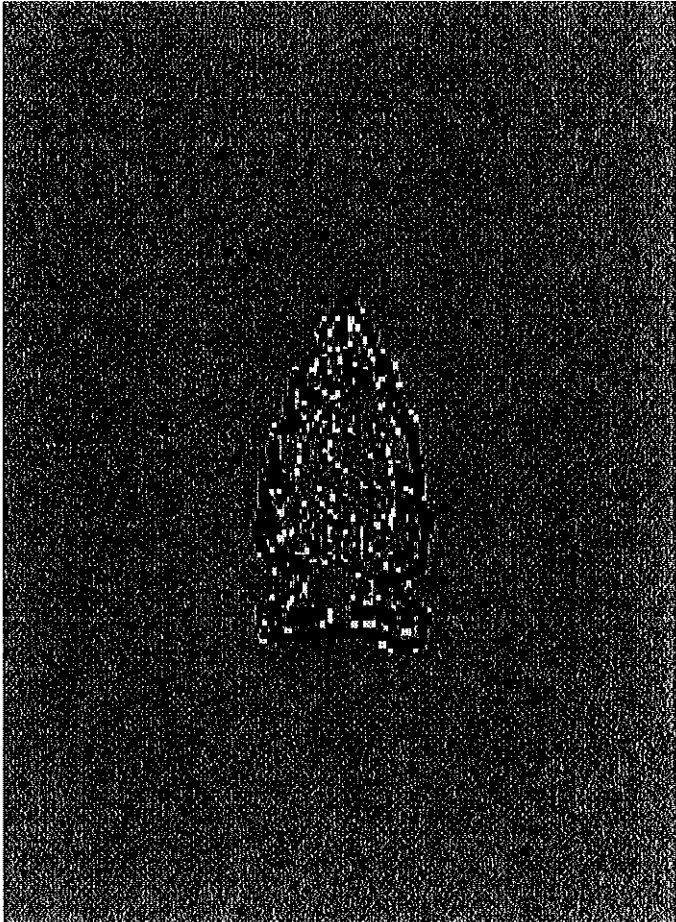
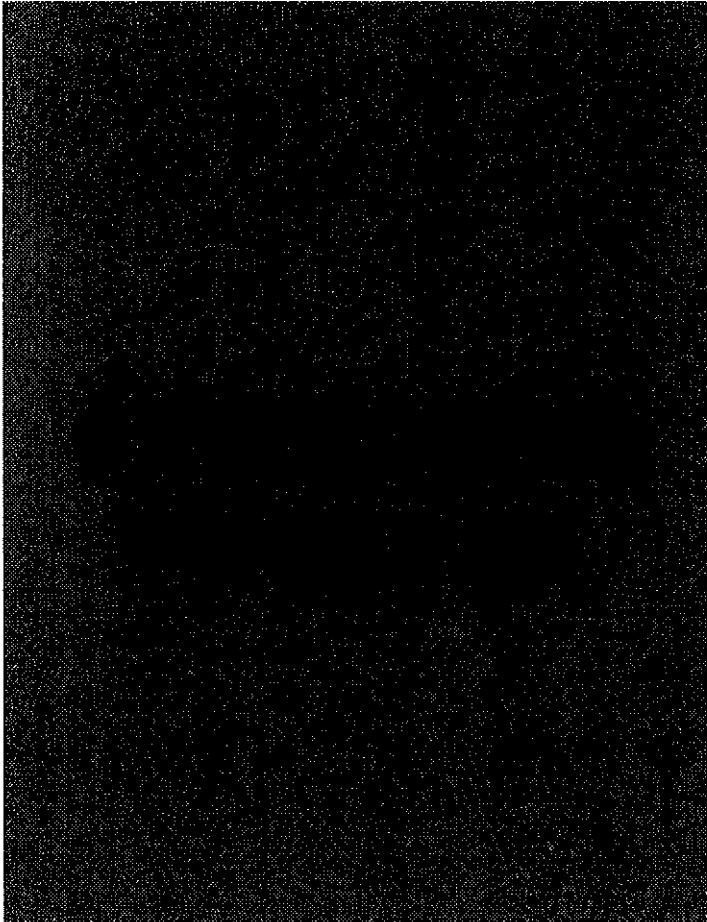


**SCHIFF
SCOUT
RESERVATION**





SCHIFF SCOUT RESERVATION GEOCACHING PROGRAM



INTRODUCTION

This document contains all of the information you need to participate in the *Schiff Scout Reservation Geocaching Program*. This program is maintained by the Sagamore Service Troop -- Pine Tree program. It is here for your enjoyment. All we ask is that you follow the rules outlined in this document so that everyone can enjoy the program.

This is version 2 of the program. All of the caches have been replaced with caches that are water-proof and permanently anchored. For those who found the original caches, we moved your log entries and whatever you left in the original caches to the new caches whenever possible. It was not always possible to move the log entries since some of the log books were soaked and illegible. All of the caches have been moved. Most are close to the original cache locations.

The new caches are made of PVC pipes with a screw top. The caches are approximately 18" long.



SCHIFF SCOUT RESERVATION GEOCACHING PROGRAM



WHAT IS GEOCACHING?

Geocaching is an entertaining adventure game for GPS users. Participating in a cache hunt is a good way to take advantage of the wonderful features and capability of a GPS unit. The basic idea is to have individuals and organizations set up caches all over the world and share the locations of these caches on the internet. GPS users can then use the location coordinates to find the caches.

Note: The Schiff Scout Reservation Geocaching Program is a private program that is not published on any website. Only scouts and scouters are permitted to participate in the Schiff Geocaching Program. This guide contains all of the information you need to participate in the program.

DO NOT, UNDER ANY CIRCUMSTANCES, PUBLISH SCHIFF GEOCACHE INFORMATION ON ANY GEOCACHING WEBSITE. WE DO NOT WANT THE PUBLIC COMING INTO THE CAMP TO FIND THE CACHES.

The Geocaching program at Schiff is a two-stage program consisting of 15 caches.

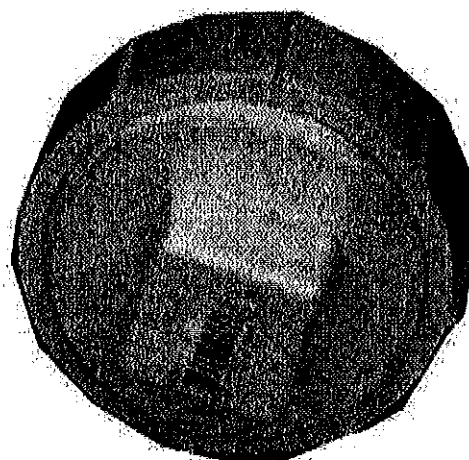
Stage 1: THE SCOUT LAW 12 geocaches, one for each point of the Scout Law.
Finding these caches will give the participant directions to the caches in Stage 2.

Stage 2: THE SCOUT OATH 3 geocaches, one for each point of the Scout Oath.

SCHIFF CACHES



The caches are constructed of PVC pipe. They are approximately 24" long. There is an opening on the bottom.



The opening is a screw cap. Caches are placed with the screw cap down to help keep water out.



SCHIFF SCOUT RESERVATION GEOCACHING PROGRAM



HOW DO YOU PRONOUNCE GEOCACHING?

You pronounce it Geo-cashing, like cashing a check.

The word Geocaching broken out is GEO for geography, and CACHING for the process of hiding a cache. A cache in computer terms is information usually stored in memory to make it faster to retrieve, but the term is also used in hiking/camping as a hiding place for concealing and preserving provisions.

So what's the big deal? You gave me the coordinates so I know where it is; seems pretty easy.

It is deceptively easy. It's one thing to see where an item is, it's a totally different story to actually get there.

WHAT IS A GPS DEVICE?

A GPS unit is an electronic device that can determine your approximate location on the planet. Coordinates are normally given in Longitude and Latitude. You can use the unit to navigate from your current location to another location. Some units have their own maps, built-in electronic compasses, voice navigation, depending on the complexity of the device.

HOW DO I USE A GPS UNIT FOR GEOCACHING?

To play, you must know how to enter waypoints into your GPS unit. We have provided a file with waypoints that can be uploaded into your GPS.

WHAT ARE THE RULES IN GEOCACHING?

Geocaching is a relatively new phenomenon. Therefore, the rules are very simple:

1. Take something from the cache.
2. Leave something in the cache.
3. Write about it in the logbook.
4. Leave the cache where you found it.

WHAT IS IN THE CACHES?

The caches at Schiff are water proof bottles containing the following items:

1. A log book. This is a spiral pad. The logbook contains information from the founder of the cache and notes from the cache's visitors. The logbook can contain much valuable, rewarding, and entertaining information, and even jokes written by visitors. The logbooks in Stage 1 caches contain coordinates to Stage 2 caches. If you get some information from a logbook you should give some back. At the very least you can leave the date and time you visited the cache.
2. A pen and/or pencil for writing on the log book.



SCHIFF SCOUT RESERVATION GEOCACHING PROGRAM



3. Since the theme of the program is the Scout Law and Scout Oath, each cache has a laminated message pertaining to a particular point of the Scout Law or Oath.
4. If you find a Stage One (Scout Law) cache, the log book will contain a portion of the latitude or longitude of one of the Stage Two (Scout Oath) caches. In order to find the second stage caches, you must find all of the Stage One caches and piece together the latitude and longitude of the Stage Two caches.

***DO NOT REMOVE THE LOG BOOK, PEN/PENCIL, OR SCOUT LAW/OATH DESCRIPTION FROM THE CACHE. IF YOU DO, OTHER PEOPLE WILL NOT BE ABLE TO PARTICIPATE IN THE PROGRAM.
YOU ARE ON YOUR HONOR.***

5. Anything else you find in the cache can be taken, as long as you leave something in return – you take something and you leave something. Exactly what you find in the cache is up to the people who found the cache before you.

What should you *not* leave in a cache? Use your common sense. Explosives, ammo, knives, drugs, and alcohol shouldn't be placed in a cache. Respect the local laws. All ages of people hide and seek caches, so use some thought before placing an item into a cache. ***Food items are ALWAYS A BAD IDEA.*** Animals have better noses than humans, and in some cases, caches have been chewed through and destroyed because of food items in a cache. Please do not put food in a cache.

WHERE ARE CACHES FOUND?

The caches are hidden all around the camp. We guarantee you will visit parts of Schiff you have never been in before. Unless you are very, very good, you will not be able to find all of the caches in a single day. While we tried not to make this too difficult, we did want to make it challenging. Therefore, the caches are usually hidden around prominent terrain features, but they are hidden. You should also know that your GPS will only get you so far. GPS units are usually accurate to within, say 30 feet. That means, the GPS will get you to into the correct area, but will not lead you right to the cache. For that you need sharp eyes. We have provided clues and photos if you wish to use them. Once you get into the area, start looking for places that a cache could be hidden.

CAN I MOVE A CACHE ONCE I FIND IT?

NO!

You enjoy playing this game, so do other people. If you move the cache, you ruin the game. Remember, a Scout is Courteous. Have consideration for everyone else who wants to have fun with Geocaching. ***Leave the caches where you find them.***



**SCHIFF SCOUT RESERVATION
GEOCACHING PROGRAM**



CACHE LOCATIONS

<u>CACHE</u>	<u>LATITUDE</u>	<u>LONGITUDE</u>	<u>CLUE</u>
STAGE 1	THE	SCOUT	LAW
SL01 TRUSTWORTHY	N 40° 56.062'	W 72° 49.544	150' off the Sunken Lake Trail
SL02 LOYAL	N 40° 56.365'	W 72° 49.681'	In a dead tree at the bottom of the gulch
SL03 HELPFUL	N 40° 56.252'	W 72° 49.572'	Big tree, 100' off the road
SL04 FRIENDLY	N 40° 55.902'	W 72° 49.970'	In a dead log, 100' off the trail
SL05 COURTEOUS	N 40° 56.180'	W 72° 49.712'	Lakeside, by the Protestant Chapel, at the head of a ravine
SL05 KIND	N 40° 56.053'	W 72° 49.975'	In the grassy area off the lake road by post # 27
SL07 OBEDIENT	N 40° 56.211'	W 72° 49.666'	Midway between the Protestant Chapel and the pump house
SL08 CHEEFUL	N 40° 56.200'	W 72° 50.036'	Off the lake road by post # 4 and Covey Cabin
SL09 THRIFTY	N 40° 55.860'	W 72° 50.029'	60' off the trail
SL10 BRAVE	N 40° 55.910'	W 72° 49.802'	100' off the trail
SL11 CLEAN	N 40° 56.392'	W 72° 49.508'	Off the hiking trail toward the property line by the cemetery
SL12 REVERENT	N 40° 56.635'	W 72° 49.973'	85' off the low point in the trail (one tree over from its original location)



**SCHIFF SCOUT RESERVATION
GEOCACHING PROGRAM**



CACHE LATITUDE LONGITUDE CLUE
STAGE 2 THE SCOUT OATH

We don't tell you where these caches are. If you want to find them, you must first find the Stage 1 caches, which contains clues to where the State 2 caches are located.

SO01 DUTY TO GOD

By post # 10 along the lake road in the pine grove

SO02 DUTY TO COUNTRY

In a rotting stump by the side of a mound

SO03 DUTY TO SELF

On the camp entrance to Rte. 25A, past the new gate 2/3 of the way to The old gate on a gnarly tree in the middle of nowhere.

Latitude & Longitude:

Symbol	Meaning
degrees	°
minutes	'



SCHIFF SCOUT RESERVATION GEOCACHING PROGRAM



WHAT DO I DO IF I FIND OUT THAT A CACHE HAS GONE MISSING?

If you visit a cache location and the cache is missing, email us at the address given below in the Feedback section. We will check the cache locations periodically to insure the caches have not been moved or stolen. Remember, these caches are not “easy” to find. Before you report one missing, look for it. The caches do not jump out and shout their location; it takes effort to find them.

RECOMMENDATIONS

When trying to find a location, it is helpful whenever possible to get on one axis (either latitude or longitude) and walk that axis until you find the intersecting axis. Once you find the intersecting point, you will be within roughly 30 feet of the cache: start hunting! Using the clues and pictures is not cheating.

Take a map and compass along for this exercise. Although Geocaching is basically a GPS based game, a map and compass can be very useful when you are trying to close in on a cache.

Wear long sleeve pants, a long sleeve shirt and use bug repellent. You will be bush-whacking, and there are plenty of ticks and chiggers in the camp.

WE WANT YOUR FEED BACK

This is the first Geocaching program at Schiff. We want your feedback to help us make this an enjoyable program. Please email your comments to SSRGeocaching@gmail.com Put the words “SCHIFF GEOCACHING FEEDBACK” in the subject line.

PHOTOS AND MAP

The following pages contain pictures and a map to assist in locating caches. You may choose not to use these aids. It is up to you. There is nothing wrong with using them.

CREDITS

SAGAMORE SERVICE TROOP

Glenn Kugler

Steve Gershowitz

Jim Guastavino

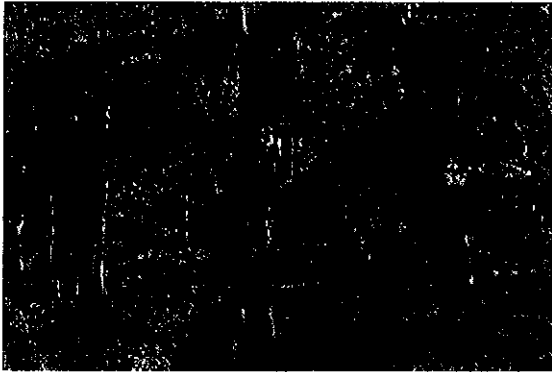


SCHIFF SCOUT RESERVATION GEOCACHING PROGRAM

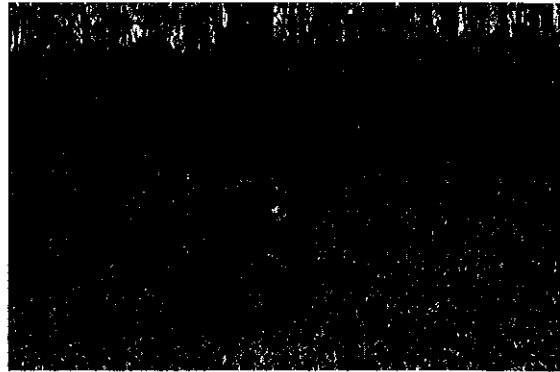


PHOTOS

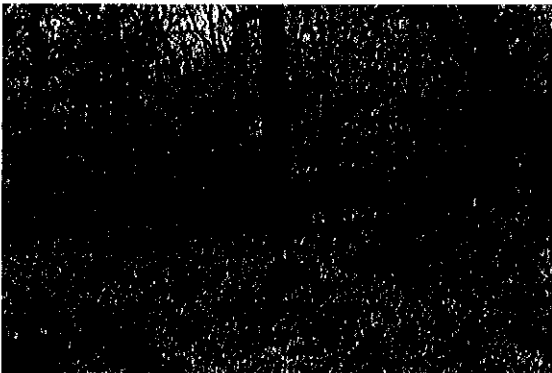
You can use these photos to help you find caches if you wish. Please note that the photos do not necessarily show a picture of where the cache is hidden, but show a prominent or unique terrain feature in the area of the cache. The terrain pictured is visible from the cache. Do not try to judge distances from the photographs. The photos provide no more than a general visual reference to the area.



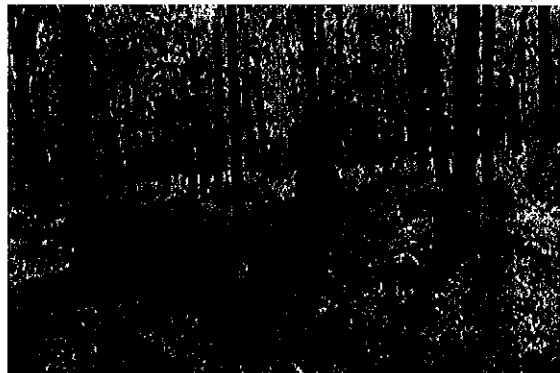
TRUSTWORTHY



LOYAL



HELPFUL



FRIENDLY



COURTEOUS



KIND



**SCHIFF SCOUT RESERVATION
GEOCACHING PROGRAM**



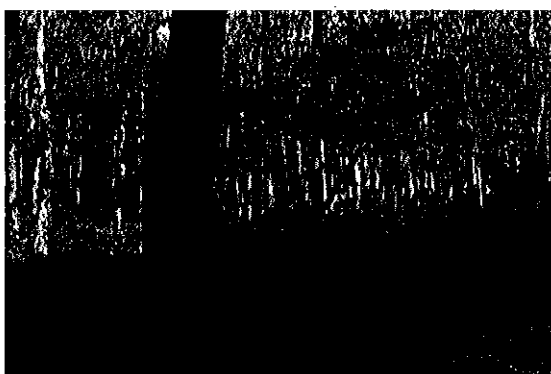
OBEDIENT



CHEERFUL



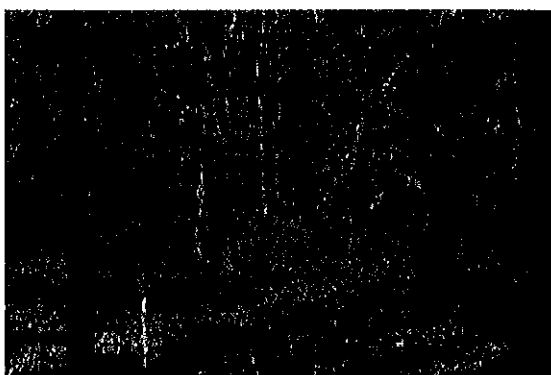
THRIFTY



BRAVE



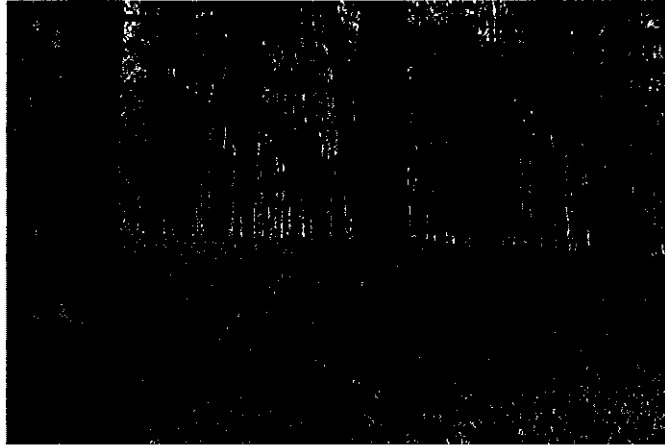
CLEAN



REVERENT

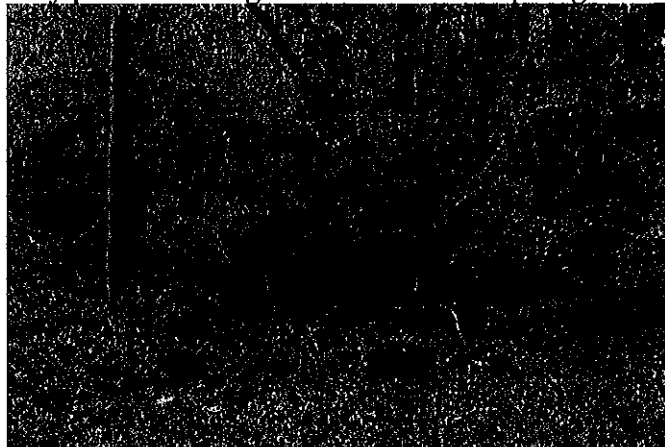


SCHIFF SCOUT RESERVATION GEOCACHING PROGRAM



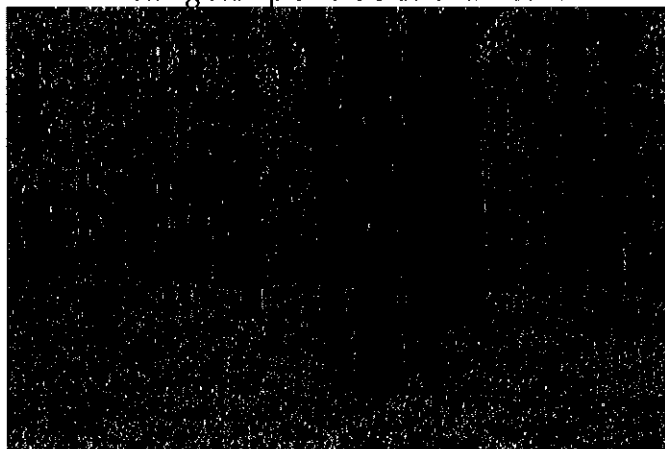
DUTY TO GOD

By post # 10 along the lake road in the pine grove.



DUTY TO COUNTRY

Rotting stump on the side of a mound



DUTY TO SELF

On the camp entrance to Rte. 25A, past the new gate $\frac{2}{3}$ of the way to the old gate on a gnarly tree in the middle of nowhere

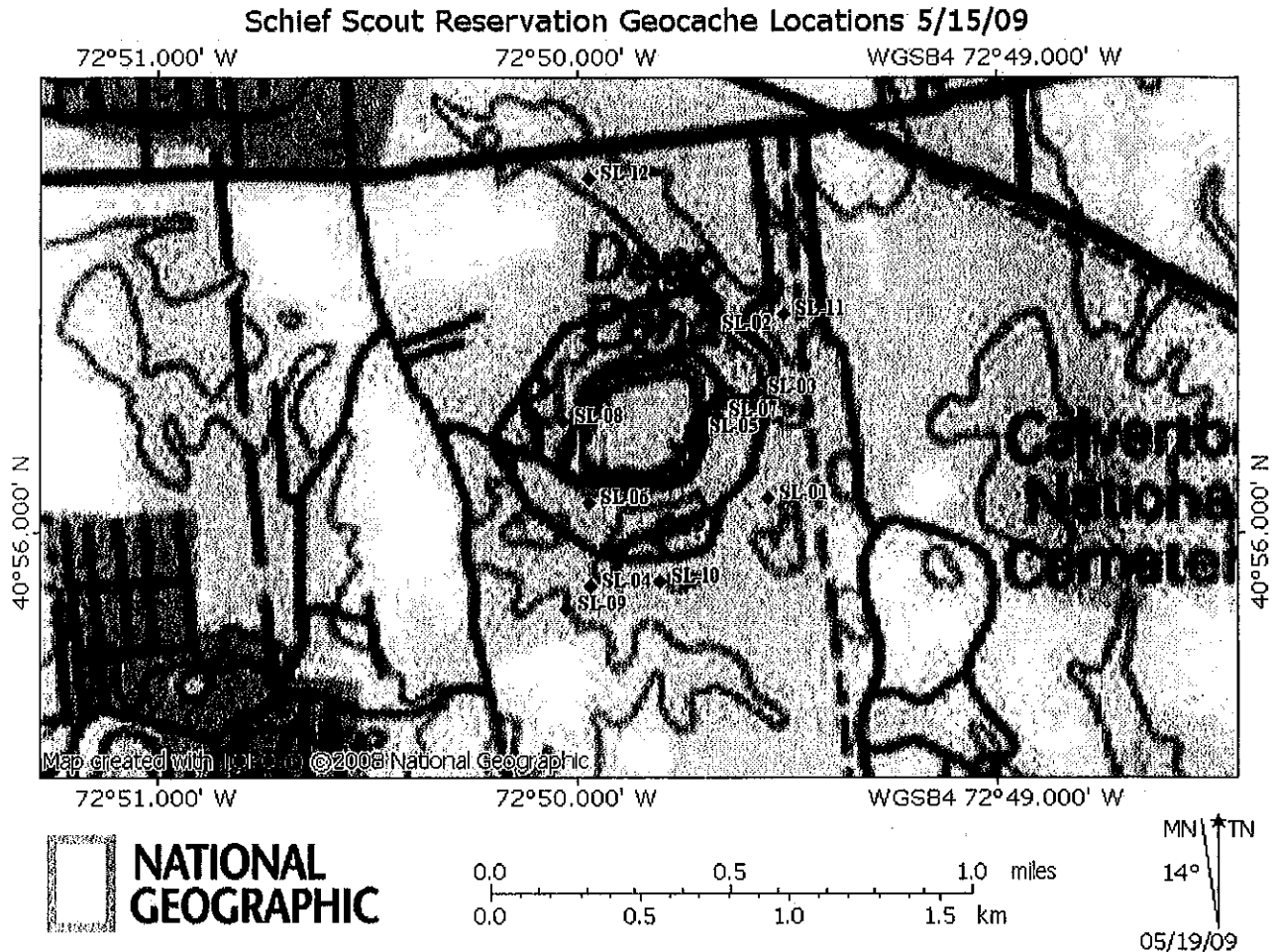


SCHIFF SCOUT RESERVATION GEOCACHING PROGRAM



MAP

You may use the following map to help locate caches.



¹ Each Stage One cache contains a piece of the latitude and longitude of one of the Stage Two caches. Latitude and longitude are expressed in degrees and minutes. For example, latitude and longitude of Hickox Hall is 40° 56.23' N, 72° 49.47' W. The clue will tell you what cache the clue pertains to (Duty to God, Duty to Country, Duty to Self) and what piece of the location the clue represents (latitude or longitude). For example, clues pointing to Hickox Hall would be as follows:

Hickox Hall – Latitude N 40 degrees
 Hickox Hall – Latitude N 56.23 minutes
 Hickox Hall – Longitude W 72 degrees
 Hickox Hall – Longitude W 49.47 minutes

By finding the **four** Stage 1 Caches with these clues, the participant will have the coordinates of one Stage 2 cache. Each location contains 4 parts. There are three Stage Two locations. Therefore, to find all Stage Two caches, you need 12 clues. There are 12 Stage One caches. Each Stage One cache will contain a piece of the clue to a Stage Two cache. To find a single Stage Two cache, you will have to locate the correct four Stage One caches containing the clues to that Stage Two cache.